



# ENABLING YOUR DREAMS TO TAKE FLIGHT

[microair.aero](http://microair.aero)

9A / 23 Ashtan Place, Banyo, Queensland, 4014  
AUSTRALIA  
+61 (07) 3040 3840

**ADMIN & SALES:**

sales@microair.aero

**TECHNICAL SUPPORT:**

support@microair.aero



## Product Categories & Availability\_

- EXPERIMENTAL / LSA
- NORSEE
- CERTIFIED

- ◆ Now
- ◆ Q3 2026
- ◆ Q4 2026
- ◆ Q1 2027

# PASSION\_ INNOVATION\_ TIMELESS DESIGN\_

Microair Avionics is a pioneering, technology inspired company designing and manufacturing avionic products for light aircraft for 28 years.

Sharing a passion for flight inspires us to create innovative avionics that combine modern technology with timeless design.

Our products are lightweight, energy-efficient and cost-effective, designed specifically for light aircraft including sport aircraft, experimental aircraft and unmanned aerial vehicles.

Our goal is to provide our customers with products that enhance their flying experience and safety without complicated setup or installation.

## Products\_



skySuite  
CORE



Digital Pitot Static  
AoA Probe



Engine System Interface



Autopilot



M760Q  
TRANSCIVER



T2000  
ADSB - IN & OUT



# SkySuite System

## Overview\_

Experience next-generation avionics with the Microair skySuite - a modular, integrated system designed to deliver exceptional performance, safety, and flexibility. Built to evolve with your aircraft, the skySuite system empowers pilots to fly with confidence through streamlined integration of essential flight systems.

Core Capabilities and integrations include:

- VHF Communications
- VHF Navigation
- Precision Navigation Sensors
- Mode S Transponder with ADS-B Out and In
- Sunlight-readable 3.1" Instrument Displays (2.1" active area, high-resolution touchscreen)
- 30+ Pilot-selectable Instrument Faces
- Digital Intercom for up to 10 seats
- Pre-wired Headphone Plates
- USB-C 15W Power Outlet at Each Seat
- Digital Pitot Static Probe
- Through-firewall Engine and Systems Interface
- Autopilot

Whether you're installing a full suite or upgrading in stages, the modular architecture lets you customise your setup to suit your aircraft and flying needs - now and into the future.

The system also features an optional 90-minute backup battery for continued display operation and a customisable digital intercom and audio system, setting new standards in modern avionics design.

**The T3000 product line will support our Experimental and LSA customers. The T4000 product line will support our Certified Customers.**

Microair Avionics skySuite – Designed for today. Ready for tomorrow.

# SkySuite CORE



## MODULES

### Technical Specifications\_

**VHF COMM** 8.33 kHz/25kHz  
 ◆ - Exp/LSA  
 ◆ - Cert  
 Selectable 6, 10, 16W TX power  
 Dual Channel Receiver

**VHF NAVIGATION** Dual Channel VOR  
 ◆ - Exp/LSA  
 ◆ - Cert  
 ILS (LOC/GLS)  
 Marker

**NAVIGATION** GNSS Position Source  
**SENSORS** Attitude and Heading Reference System (AHRS)  
 ◆ - Exp/LSA  
 ◆ - Cert  
 • Airspeed (300 kts @ SL)  
 • Altitude (55,000 ft)  
 • OAT (-40°C to +70°C) (-40°F to 158°F)

**INSTRUMENT DISPLAY FACES** Artificial Horizon  
 ◆ - Exp/LSA  
 ◆ - Cert  
 Altimeter  
 Air Speed Indicator  
 Directional Gyro  
 Turn Coordinator  
 Autopilot  
 Traffic Display  
 Clock with Timer

**TRANSPONDER** Mode S  
 ◆ - Exp/LSA  
 ◆ - Cert  
 ADSB In and Out  
 ADSB Diversity Out

**BATTERY** 90 min at full brightness  
 ◆ - Exp/LSA  
 ◆ - Cert  
 All navigation sensors  
 Radio receiver  
 Traffic receiver

**DISPLAYS** 3.1" Display (2.1" active touch screens) and more than 20 user-selected instrument faces.  
 ◆ - Exp/LSA  
 ◆ - Cert

Horizontal Situation Indicator  
 Vertical Speed Indicator  
 Radio Magnetic Indicator  
 Engine & System Interfaces  
 • RPM, MAP, Fuel Flow  
 • Oil Temp, Pressure  
 • CHT & EGT + Leaning  
 • Electrical Voltage Current  
 • Fuel Qty & Totalizer

Standby EFIS  
 COMM Radio Controls  
 Transponder Controls  
 NAV Radio Controls  
 Master Caution  
 Checklists  
 plus settings pages

### ADDITIONAL OPTIONS

**DIGITAL INTERCOM AND AUDIO SYSTEM** Crystal-clear Digital audio  
 ◆ - Exp/LSA  
 ◆ - Cert  
 Personalized audio control  
 Bluetooth connectivity for entertainment  
 USB-C Power (15W)  
 Options for GA, LEMO and other connectors  
 Simplified audio cabling  
 One Audio Unit per occupant

**REMOTE DISPLAYS** Additional Remote Displays can be purchased to complete your panel. Up to thirty-two 3.1" displays can be added to your skySuite system.  
 ◆ - Exp/LSA  
 ◆ - Cert



# Digital Pitot Static Probe

- ◆ - Experimental/LSA
- ◆ - NORSEE
- ◆ - CERTIFIED

## Overview\_

The Fully Integrated Probe, containing an Air Data Computer and an Attitude and Heading Reference System, replaces any AN5812 Pitot Probe with no extra hardware or plumbing required. Simply use the supplied data harness or our installation kit.

The Digital Pitot Static Probe provides the following functionality + data, all visible of one or more skySuite instrument display:

<b>Airspeed</b>	<b>Altitude</b>	<b>Verticle Speed</b>	<b>Angle of Attack</b>
<b>Outside Air</b>	<b>Attitude</b>	<b>Heading</b>	<b>Clock</b>

## Key features\_

- Optional 120W anti-icing heater (available in either 12V or 24V) with digital temperature control.
- Triple redundant air data sensors provide optimised performance and enhanced safety.
- Digital technology with a timeless design.
- Available as a stand-alone system or a fully-integrated component of the skySuite system for Experimental and Light Sport aircraft.

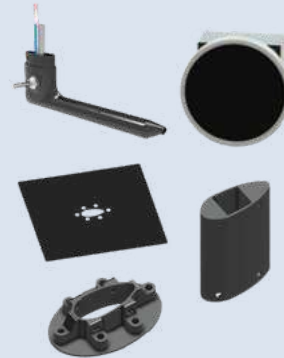


# Digital Pitot Static AoA Probe

## Technical Specifications\_

<b>TSO Equivalence</b>	C-16 (AS8006A) C-54 (ASTM3011-21) C-106a (AS8002B, AS8005A) C-113b (AS6296) C-201 (DO-334) DO-160G
<b>Operational Ranges</b>	-1000 to +55,000ft 0 to 380kts
<b>Input Power</b>	8-33VDC Less than 1.5W Average
<b>Anti-icing</b>	Optional 120W Heater Available in 12V or 24V
<b>Operating Temperature</b>	-40° C to +70°C (-40°F to 158°F)
<b>Probe Dimensions</b>	Width 52mm Height 64mm Length 199mm Weight 200g (7oz)

### NORSEE Installation Kit inclusions:



- T3000 Pitot Static Probe
- T3000 REM 2.1" Display\*
- T3000 REM Housing\*
- PSP Mounting Plate
- PSP Mount Mast
- PSP Mount Flange
- REM Power Harness, 12ft IEH Harness
- 12ft PIH Harness\*\*
- All mounting hardware

\*Kits can be purchased with additional 2.1" displays

\*\*Only supplied with kits containing heated pitot static probes

# Engine System Interface (ESI)

\*NISUS Gyrocopter



## Overview\_

The Engine and Systems Interface (ESI) is the heart of engine and aircraft systems data management for integration with your skySuite. It captures real-time information from your engine, fuel, electrical, and sensor systems and delivers it seamlessly to your cockpit displays. With the ESI installed, pilots gain a complete picture of engine health, performance, and critical systems status - supporting safer, more efficient flight operations.

Designed for flexibility, the ESI supports a wide range of engine types and sensor inputs, making it ideal for Light Sport, and Experimental aircraft.

Whether you're upgrading or building new, the ESI delivers streamlined integration, reduced wiring complexity, and intelligent system awareness.

## Key features\_

- Innovative "Through-Firewall" installation
- Analog Version:
  - 18 configurable thermocouples (5 RTDs)
  - 10 configurable voltage / resistance / frequency (2 direct P Mag)
  - 2 Battery/Alternator Voltage and Current
- Digital Version:
  - 2 CAN
  - RS485 & RS232
  - 3 configurable thermocouples/ RTDs
  - 6 configurable voltage / resistance / frequency
  - 4 Battery/Alternator Voltage and Current
  - 18 Discrete inputs (configurable pull high or low)
- Cold-side connections for Systems Interface Data including:
  - Fuel Qty x 4 and Fuel Flow
  - Battery Voltage and Current
  - 6 x System Discreet Inputs (Flap position, Gear position etc) or Switched Outputs



# Engine System Interface (ESI)

## Technical Specifications\_

<b>TSO Equivalence</b>	TSO-C44c TSO-C45b TSO-C47a TSO-C49b TSO-C55a 14CFR 23.1192 firewall requirements
<b>DC Power</b>	8 to 33V <5W
<b>Sensor Power</b>	5 and 12V 200mA
<b>Temperature</b>	K, J, N, R, S, T, E, B and RTD
<b>Sensors</b>	Voltage / Resistance / Frequency / Pulse Width
<b>Discrete Inputs</b>	
<b>Discrete Outputs</b>	Active pull down or pull up Open Collector
<b>Dimensions</b>	59mm x 190mm x 106mm (approx. 2 3/8" x 7 1/2" x 4 1/8")

## Peripherals\_

Available Separately



Fuel Flow Transducer



CHT Probe Bayonet Style Type K



Induction Air Probe



EGT Probe Type K



Oil Temperature



Pressure Sensor Abs 0 - 50 Hg 1/8 F NPT



Type K Wire



Pressure Sender 150 PSI 1/8 F NPT



Current Bridge +/-60Amps



# skySuite



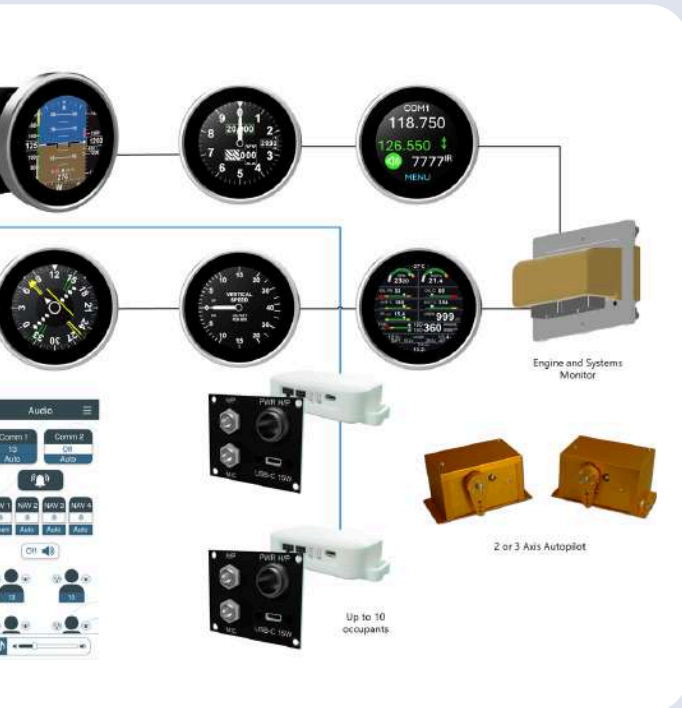
The classic "six-pack" layout features six primary flight instruments, delivering essential information and forming the foundation of instrument flying for pilots with basic VFR or IFR needs.



A panel that combines a classic "six-pack" with a clock, VHF radio, transponder, and a dedicated engine and systems interface. Delivering integrated communication, and real-time flight data for enhanced situational awareness. Engine performance, fuel levels, and electrical status are all provided to support safer, more efficient flight.



# System Architecture



A traditional "six-pack", combined with a clock, VHF radio, and transponder, delivers all the core functionality required for flight in controlled airspace. Offering situational awareness, comms, and compliance in a compact, capable setup.



An advanced panel upgrade featuring 13 dedicated instrument displays, including a classic "six-pack" layout, VHF radio, transponder, engine and systems interface, and integrated autopilot- plus an iPad running your preferred EFB app for navigation and flight planning. With traffic displayed directly on the panel and real-time engine, fuel, and electrical data, it offers full flight awareness, and communication for modern, efficient operations.

# Autopilot

◆ - Experimental/LSA



Microair Avionics has partnered with Trio Avionics to bring advanced, safety-enhancing autopilot capability to the skySuite system. This powerful integration connects the intuitive control of the Trio Pro Pilot Autopilot with the flexible, modular design of Microair's T3000skySuite system.

The result is a feature-rich cockpit solution. Pilots can now access precision autopilot modes including altitude hold, vertical speed and airspeed control, GPS navigation and approach, Auto 180, envelope protection, and more, all from within a seamless, integrated suite. This collaboration delivers enhanced situational awareness, workload reduction, and elevated performance in a lightweight and retrofit-friendly package.

## Safety features\_

### Auto 180

With a single press of either servo button, initiates a precise 180° course reversal and activates altitude hold, ideal for disorientation or unplanned course changes.

### Recover

Automatically returns the aircraft to level flight if it detects an unsafe or extreme attitude, offering immediate assistance in upset conditions.

### Automatic Servo Disconnect (Takeoff Protection)

Safeguards against inadvertent activation by disconnecting servos automatically during takeoff if left engaged.

### Track Offset

Enables flight parallel to the programmed GPS route, offering flexibility to avoid congested airways while remaining within navigation boundaries.

### Envelope Protection

Prevents the aircraft from exceeding safe airspeed limits by monitoring and limiting both minimum and maximum thresholds.

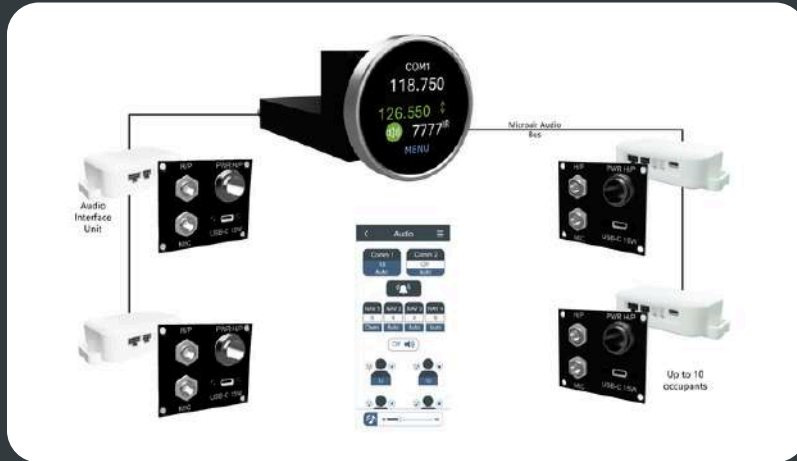
### Intelligent Servos

Built-in fault detection shuts down the system if invalid data or internal errors are detected—ensuring safe and reliable operation at all times.



# Digital Intercom & Audio System

- ◆ - Experimental/LSA
- ◆ - CERTIFIED



Experience unparalleled in-flight communication and entertainment with the skySuite Digital Intercom and Audio Interface System, designed to provide seamless audio connections between crew, passengers, and radio systems.

The Audio Interface System redefines in-flight audio with its groundbreaking individual control features. Passengers can personalize their audio settings, choosing their preferred entertainment, who they talk to and which radios they listen to while allowing pilots to override at any time. A call system ensures pilots are informed when isolated.

Whether it's streaming music or sharing audio content, the Digital Intercom and Audio System offers a bespoke audio experience that enhances comfort and satisfaction for every flight.

## Features:

- Crystal Clear Digital Audio: Enjoy superior sound quality for all communications and entertainment needs.
- Personalized Audio Control: Each passenger and crew member can tailor their own audio experience, while pilots retain the ability to override at any time.
- Bluetooth Connectivity: Effortlessly stream your favorite music or entertainment wirelessly. Share your entertainment audio with other passengers.
- Efficient USB-C Power (15W): Modern, fast-charging solution for all your devices.
- Versatile Connector Options: Compatible with GA, LEMO, and other industry-standard connectors for easy installation.
- Streamlined Audio Cabling: Reduces complexity, enhances reliability, reduces weight.

# T2000

## T2000SFL Transponder



## Overview\_

The T2000SFL is one of the world's smallest and lightest certified Mode 3A/C transponders, weighing just 600g. With over 5,000 units still in operation globally, it's a trusted solution for certified aircraft where space, weight, and efficiency are key.

Despite its size, the T2000SFL delivers low power consumption and advanced safety features typically found in larger, more costly systems. Certified to TSO C-74C, it integrates easily with any C88a-compliant altitude encoder, including the Microair EC2002.

**CERTIFIED**

## Technical Specifications\_

<b>TSO Approval</b>	C-74C
<b>RTCA Compliance</b>	DO-144 DO-160D DO-178B Level C
<b>Transmitter</b>	1090MHz +/-0.2MHz 200W Pulse Output 80nS Rise Time 120nS Fall Time
<b>Receiver (1030MHz)</b>	-7 to -71dBm Dynamic Range 1030MHz Centre Frequency +/-5MHz Pass band
<b>Input Power</b>	10-33Vdc 100-150mA @ 28V 150-200mA @ 14V
<b>Operational Modes</b>	Standby Mode 3A Mode 3A/C Mode 3A/C with Altitude Displayed
<b>Dimensions</b>	Length 169mm (6.65") Width 61mm (2.40") Height 61mm (2.40")
<b>Weight</b>	600g (21 oz)
<b>Features</b>	Encoder Altitude Display Option Altitude Alert Voltage Monitoring and Alert Switched Encoder Power Output Suppression In / Out Remote Standby Switch Option Remote Ident Switch Option Audio Beep Alert Tone

# RANGE

## Overview\_

The Microair ADSB-IN/OUT Transponder integrates Mode A and C, ADS-B Out, ADSB-In, GPS position source, and altitude encoder in one compact unit.

Designed for easy installation, the ADSB-IO Transponder enhances your situational awareness by both receiving transmissions from surrounding aircraft and making you visible to other aircraft. It streams traffic data to your preferred EFB App supporting GDL90 traffic, on an Android Tablet or iPad.

T2000ADSB-OUT version also available.

ADSB Upgrade options are available for T2000SFL Experimental & LSA customers.

### EXPERIMENTAL & LSA

## T2000ADSB-IO Transponder



## Technical Specifications\_

<b>TSO Equivalence</b>	C74c Class 1a C88a (to 30,000 feet) C166b Class A0 (with B1S power output) Environmental DO-160G Software DO-178C DAL-C
<b>Mounting</b>	Panel mount 2 1/4" (57mm) round
<b>Temperature</b>	-20 to +55 Celsius
<b>Altitude</b>	55,000 feet, inbuilt encoder to 30,000 feet
<b>Cooling</b>	Not required
<b>Power Input</b>	10 to 33 volts DC negative chassis ground, 7W peak
<b>RF Output</b>	200 watts (nominal peak power)
<b>SWR Tolerance</b>	<5:1 or open feed line
<b>Control/Backlight</b>	LCD with rotary selector for setting Mode A code, Flight ID and settings. Push buttons for easy access to common features such as Ident and VFR
<b>Dimensions</b>	61 mm wide x 61 mm high x 160 mm deep (2.4" wide x 2.4" high x 6.3" deep)
<b>Weight</b>	600 grams (2.1 oz)
<b>Connections</b>	DB25 for power, Gillham code, serial, discrete inputs. Interchangeable with T2000SLF transponder and T2000ADSB without wiring changes. BNC – transponder antenna TNC – GPS antenna 1/8" NPT - static
<b>Options</b>	Wiring harness available

# M760 Transceiver



## Overview\_

One of the smallest panel-mounted VHF aircraft radios in the world, the M760 is packed with features.

Built on decades of dependable service, the M760 continues to set the benchmark for reliability and performance in VHF communications and is certified under an Australian PMA with formal recognition by FAA and EASA member states.

**CERTIFIED**

## Technical Specifications\_

Radio: Channels (Transmit)	760 channels, 25KHz spacing 118.000 – 136.975MHz
Channels (Receive)	1160 channels, 25KHz spacing 108.000 – 136.975MHz
Frequency Selection	Concentric dials for MHz and kHz
Frequency Display	2 line alpha/numeric LCD display (with back-lighting)
Memories	99 programmable memories
Dual Motor	100ms Scan Time
Power Consumption	Receive (no signal, no backlight) 140 mA Transmit 1.9 A
Input Voltage	10.7 – 16.0 Volts
Power Output	5 watts (nominal)
VSWR Tolerance	< 2:1 for best operation (5:1 without damage)
Receiver Sensitivity	-12dB SINAD @ 0.3uV (1KHz audio with 70% modulation)
Receiver Selectivity	70dBm
Squelch Range	0.5 - 10.0uV
Data Interface	RS232
Speaker Volume Output	Nominal 4 watts output to 4 ohms
Headset Volume Output	100mW into 150 Ohms (maximum audio output) 60mW into 300 Ohms 30mW into 600 Ohms
Auxiliary Audio Input	Line-level audio
Temperature Range	From -20 to +55 degrees Celsius
Dimensions	65mm wide x 59mm high x 135mm deep (2.6" wide x 2.3" high x 5.3" deep)
Exposed Dial Face	57mm diameter 2 ¼" diameter
Weight	416 grams (14. oz)



# Accessories

## Harnesses\_

We offer a range of pre-configured and custom harnesses to support our full product line. Harnesses can be tailored to suit your specific installation needs, including custom lengths and connector configurations, making integration fast, streamlined, and reliable.



M760 Wiring Harnesses



T2000 Wiring Harnesses



Coax Cable Assemblies



T3000 Harness

## Other accesories\_

In addition to our flexible harness options, we offer a range of accessories to complement and support your Microair product purchase. This includes antennas, adaptors, noise suppression filters, audio amplifiers, and speakers - providing everything you need for a streamlined, reliable, and professional installation.



GPS Antennas



VHF Antennas



Transponder Antennas



Pre-Amplifiers



Adapters



Speakers



# Notes\_

